

Analysis Without The Limitations

SerialTek BusXpert Pro II SAS/SATA Analyzer

UNPARALLELED PERFORMANCE

Upload and display traces using

- PCI Express > 550MB/s
- Gigabit Ethernet > 70MB/s
- Pre-Indexed Trace for faster searching and display
- InstaSearch technology

ACCURATE CAPTURE

- 500 pico second Timestamp Resolution
- Eye-Opener front end
- Tunable RX/TX signalling

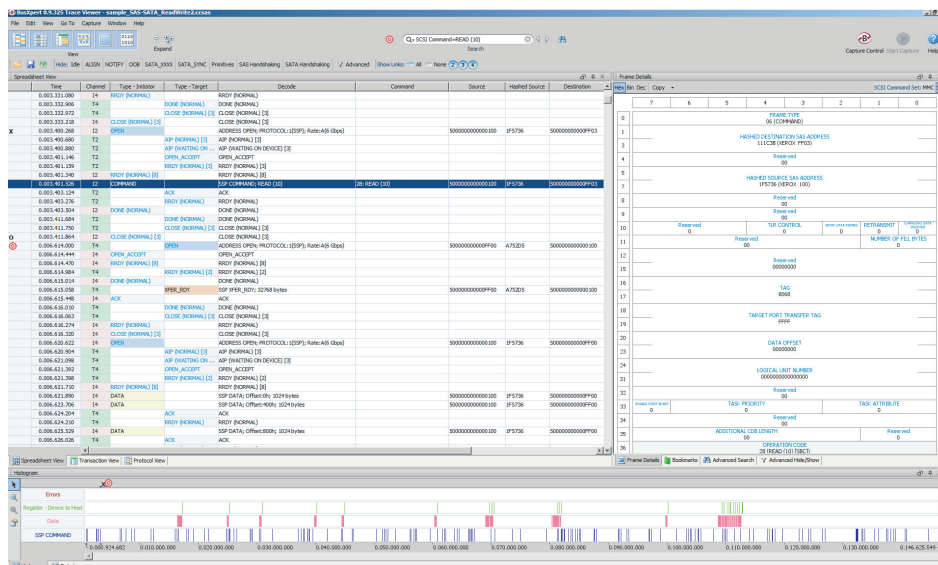
CONVENIENT DESIGN

- Up to 72GB of trace buffer
- Lightweight and Compact
- Cascade multiple units for time and event based synchronization
- 7 unique Status LEDs per port



- Record, upload and display up to 12Gb/s SAS and up to 6Gb/s SATA traffic in seconds with either Gigabit Ethernet or PCI Express
- Eye-Opener front-end, Tunable RX/TX signalling, and 500ps timestamp resolution for industry's most accurate capture
- Lightweight and compact design for ultra-portability
- Available with 4 bi-directional ports and up to 72GB of trace buffer

For today's SAS and SATA developers and integrators, getting to the root of a problem can be especially difficult when there isn't an obvious trigger condition. Troubleshooting is further complicated by ever-climbing storage capacities, data rates, and protocol complexity. Faster and deeper analyzers are needed to keep up. Traditionally, those needing to capture large amounts of traffic have been faced with limited trace buffers, long waits to view the data, slow searches, and slow saving. SerialTek has overcome the old limitations with the BusXpert Series of SAS/SATA Analyzers. The BusXpert uses advanced technologies such as the industry's first PCI Express x4 uplink to the host (550 MB/s), up to 72GB of buffer, Hardware Accelerated Gigabit Ethernet, pre-indexed and compressed trace data, multiple analysis processors, and instant display of the captured data. The BusXpert also features easy to use triggering, pre/post-filtering, textual search and sequence search, and many different displays of the captured traffic. It's available in a variety of configurations to fit specific needs for buffer size, port-count, protocols, and budget. The BusXpert breaks free of past analyzer limitations and lets users spend more time on development and debug efforts. SerialTek delivers on it's promise of "Analysis Without the Limitations".



ADDITIONAL FEATURES

- XML based decoding
- Easy definition of custom decodes
- Normal & Aggressive Primitive Compression
- Status LEDs for
 - SPD
 - OOB
 - Link
 - Frame
 - 10b Err
 - Command
 - Err Sts
- Up to 8 simultaneous trigger sequencers
- Post Filtering / Hiding
- Trace Export to CSV, HTML, XML
- Live SAS Address Table
- API
- Live/Post Performance Analysis

SPECIFICATIONS

PRO

- 100-240VAC 50-60Hz
- 200W Max Power
- 40 Deg C Max Ambient Temperature
- 10" x 14" x 3.5"

Sample Configurations and Part Numbering

The BusXpert PRO and Micro series are available in several different configurations. Below is a sampling of configurations with part numbers:

Part #	Description
P2A-m12SA-36GB	BusXpert Pro II Analyzer, 4-port, 12Gbps SAS / 6Gbps SATA, 36GB Buffer
P2A-m6SA-9GB	BusXpert Pro II Analyzer, 4-port, 6Gb/s SAS/SATA, 9GB Buffer

System Requirements

To get the best performance out of your BusXpert Analyzer, we recommend the following systems:

- Minimum configuration: 1.5Ghz Celeron or AMD equivalent processor, 1GB of Memory, Gigabit Ethernet and/or USB, Graphics capable of supporting 1024x768
- Recommended Configuration: 2.8Ghz or greater dual-core processor, 3GB or greater of 1.3Ghz FSB memory, PCIe x4 or ExpressCard slot, Graphics capable of supporting 1920x1200 or greater

BusXpert software is compatible with Windows XP and Windows Vista, Windows 7 32 and 64-bit platforms.

BusXpert is also compatible with Linux: Ubuntu, Fedora, and RedHat/CentOS.

BusXpert requires minimum of 90MB for installation. Additional disk space is recommended for storing traces.

About SerialTek

SerialTek's experienced team shares a common goal: Design and build the ultimate analyzer platform to eliminate the bottlenecks that keep developers waiting. SerialTek is committed to raising customer expectations with each successive year of innovation.

For additional information or questions regarding SerialTek products, including quotes, product demonstrations, software and technical assistance please contact us at:

sales@serialtek.com

support@serialtek.com

<http://www.serialtek.com>

SerialTek

SerialTek, LLC
1570 Oakland Rd
San Jose, CA 95131
Phone 408.436.8080
Fax 408.436.8098